

# CREEK LINES



**NEWSLETTER**

**SPECIAL  
EDITION**

**DEC 2023**

## Chairman's Report - AGM

### INTRODUCTION

After 11 years as President/Chair, the time is right to step down from that role and hand over to someone else with fresh ideas. A change at this point will help to ensure that the group continues to grow and prosper. I am not going anywhere and I will nominate for committee and hope to continue to contribute where I can. I thank you all for the tremendous support I have received over all of my time leading the group - I am very grateful to you all.

### YOUR 2022/23 COMMITTEE

Joining me on committee this year have been Mick Davis (Deputy Chair), Mike Mansfield (Secretary) John Greenwood (Treasurer), Dick Parker, Terry Ballinger, Marie Jacquier, Liam Whiting, Nick Underwood, Steph Bewick, Jo Randall, Joanna Anderson and Danielle Page. As has been noted in previous reports, we are very fortunate in having a diverse range of skills and attributes across the committee and that was certainly the case again this year.

Jo Randall and Joanna Anderson were new to the committee this year and made an immediate impact. Thank you both.

I would also like to acknowledge members not currently on committee who made exceptional contributions to our success.

Carmel and Terry Ballinger progressed from their purely personal contribution to our plant propagation work to this year forming a highly successful Friends of Upper Lesmurdie Falls Propagation Group that raised many thousands of plants for the site.

Again this year Angie and Sophie Parker continued where they left off in 2021/22 with their wonderful morning teas. On the odd occasion when they couldn't make it, Ruth Greenwood and Steph Bewick have filled the gap with aplomb. These morning teas are very special and greatly looked forward to by all our volunteers.

Angie has again undertaken the collection of volunteer hours and forwarded them to DBCA. Those figures allow us to prove our contribution to our funding bodies – so a vitally important part of our continuing operations.

### THE YEAR THAT WAS

2022/2023 has turned out to be another very busy and productive year. Once again our wonderful volunteers have turned out to our Busy Bees in impressive numbers and completed a wide range of tasks with enthusiasm and skill.

Proudly Sponsored by:

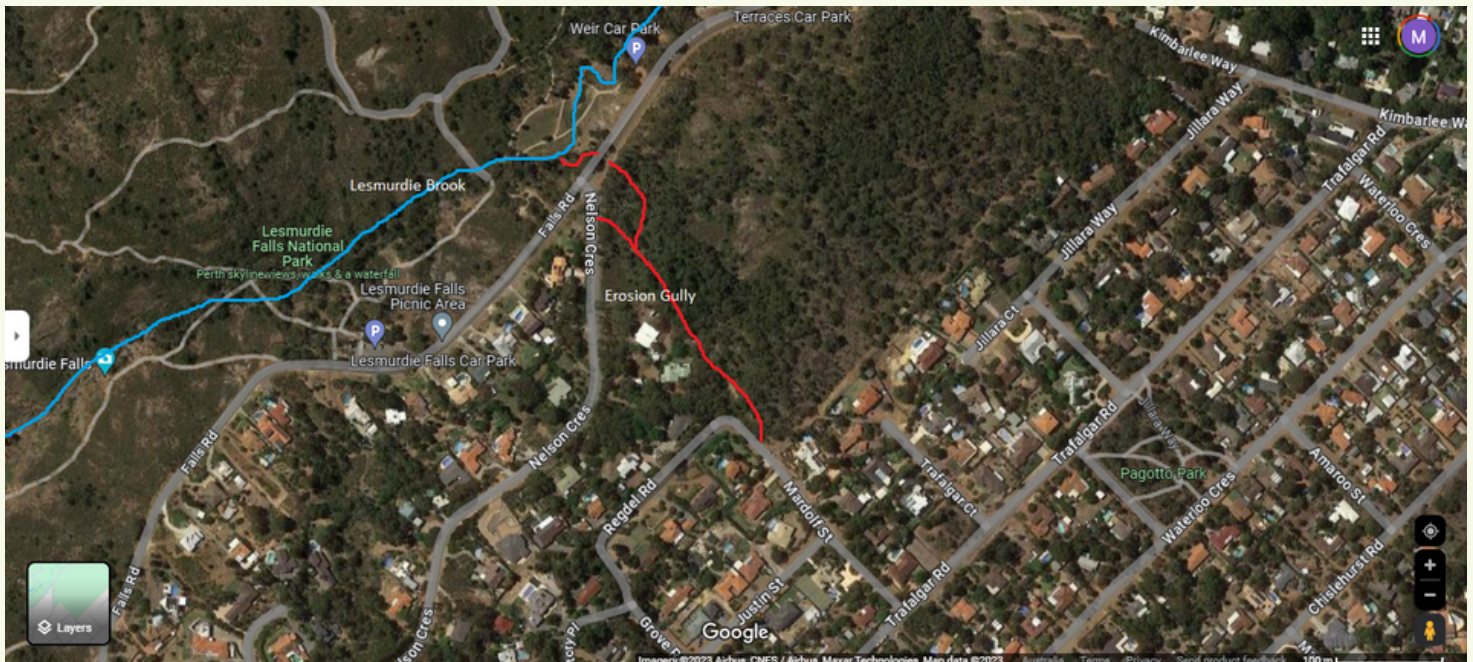


# PROGRESS SINCE THE LAST AGM

## Funded projects

This year we had five funded, active projects – the Erosion Gully Project, the Eroded Tributary Project, the Infill and Extension Project, the Dieback Project and the Up the Creek Project.

## The Eroded Tributary and Erosion Gully projects



### **Erosion Gully - original storm water cause**

The Eroded Tributary and Erosion Gully projects jointly contribute to the rehabilitation of the erosion gully south of Falls Road and stretching from the corner of Regdel Road and Mardolf Street all the way to the bottom of Nelson Crescent. At the end of 2021/22 we had completed the great majority of our commitments under our funding agreement with the Rivers and Estuaries section of the Department of Biodiversity, Conservation and Attractions (DBCA). However we still had a sizable planting program to complete and we had applied to use surplus funds to further our weed control program. The approval to undertake the additional weed control came through early in 2022/23 and we were able to complete both the planting program and the additional weed control this year. Having completed both projects, we recently submitted our final reports for both projects and are now awaiting confirmation that these have been accepted by DBCA.

The planting program saw an additional 3,500 plants planted out as infill planting amongst those planted in previous years. Species planted included *Taxandria linearifolia*, *Gastrobium ebracteatum*, *Machaerina laxa*, *Machaerina rubiginosa*, *Lobelia anceps*, *Acacia alata*, *Acacia pulchella*, *Anigozanthos manglesii*, *Banksia sessilis*, *Thomasia macrocarpa*, *Darwinia citriodora*, *Kennedia coccinea*, *Hakea petiolaris* and *Hypocalymma angustifolium*. Many of these were raised by our own Propagation Group. The reallocated weed control funding was mainly used for three problem weeds – Wonga Wonga Vine (*Pandora pandorana*), Pink Pavonia (*Pavonia hastata*) and Three Cornered Garlic (*Allium triquetrum*). Infestations of mature *P. pandorana* were present on private land immediately adjacent to the greater project area in two patches – one alongside the erosion gully and the other at the far eastern boundary of Mundy Regional Park on Falls Road. Both patches represented a threat to the rehabilitation work we are undertaking and, with the landholder's permission, were treated with herbicide. Later some surviving plants were removed by hand. The patch adjacent to the erosion gully is now down to very low numbers of relatively small plants which will be removed over the coming year. The Falls Road patch was both larger and denser at about half a hectare and comprising many large vines. We have reduced the infestation dramatically but still have more work to do there. However it is now within our capacity to complete the task.

Proudly Sponsored by:



natural resource management program



Department of Biodiversity, Conservation and Attractions



*Pavonia hastata* was present in a relatively small area of about 2 hectares adjacent to the Lesmurdie Falls Car Park. Most of the plants were grubbed out but one small, dense patch was treated with herbicide. The herbicide treatment wasn't completely successful but only small numbers survived and they have now been hand pulled or grubbed out. We have reduced the infestation by at least 90% and can now work towards complete eradication. In this same area, we have been removing *Genista linifolia* for some years now and we combined the search and destroy mission for the *Pavonia* with opportunistic removal of any *Genista* encountered. A similar situation existed for Blackberry with three patches successfully removed. Three Cornered Garlic has spread rapidly over the last few years and attempts to dig it out had failed due to the presence of very high numbers of tiny bulblets – which disappear into the soil to germinate the following year. So as part of the reallocated funding, we had the major infestation sprayed. Unfortunately it too proved to be an abject failure and we will need to find alternative ways to deal with this particular weed.

In addition to the work listed above, we continued to remove seedlings of other woody weeds - Sydney golden wattle (*Acacia longifolia*), Flinders Range wattle (*Acacia iteaphylla*), lantana (*Lantana camara*) and myrtle-leaved milkwort (*Polygala myrtifolia*) - across the erosion gully site. Seedling removal of these species, here and elsewhere across our site, will need to continue for some years yet. At the end of 2021/22 we had just completed the construction of our kangaroo proof enclosure. Over 2022/23 it was carefully monitored to see how effective it would prove to be. Despite some early incursions, it has worked very well and allowed the establishment of many new plants and the recovery of some damaged ones from previous year's plantings. The current plan is to leave it in place for as long as it is needed. That will depend on when we stop adding new plants to that area, as it will need to remain for at least two years after the last plant goes in.

Monitoring of the water flow through the area has shown that our efforts to stop erosion continue to be highly effective.

At the completion of these two projects we can feel proud of the impact we have made in restoring this area, preventing further erosion and reducing sedimentation of Lesmurdie Brook.

## The Infill and Extension project

The Infill and Extension project, funded by State Natural Resources Management, is now also nearing completion. At the end of 2021/22 we had undertaken initial infill planting at the upper end of our site, commenced preparations of the area from the Cascades to the Falls for planting (removing woody weeds) and sprayed the African Feather Grass behind the "hockey stick" at the far eastern end of our site.

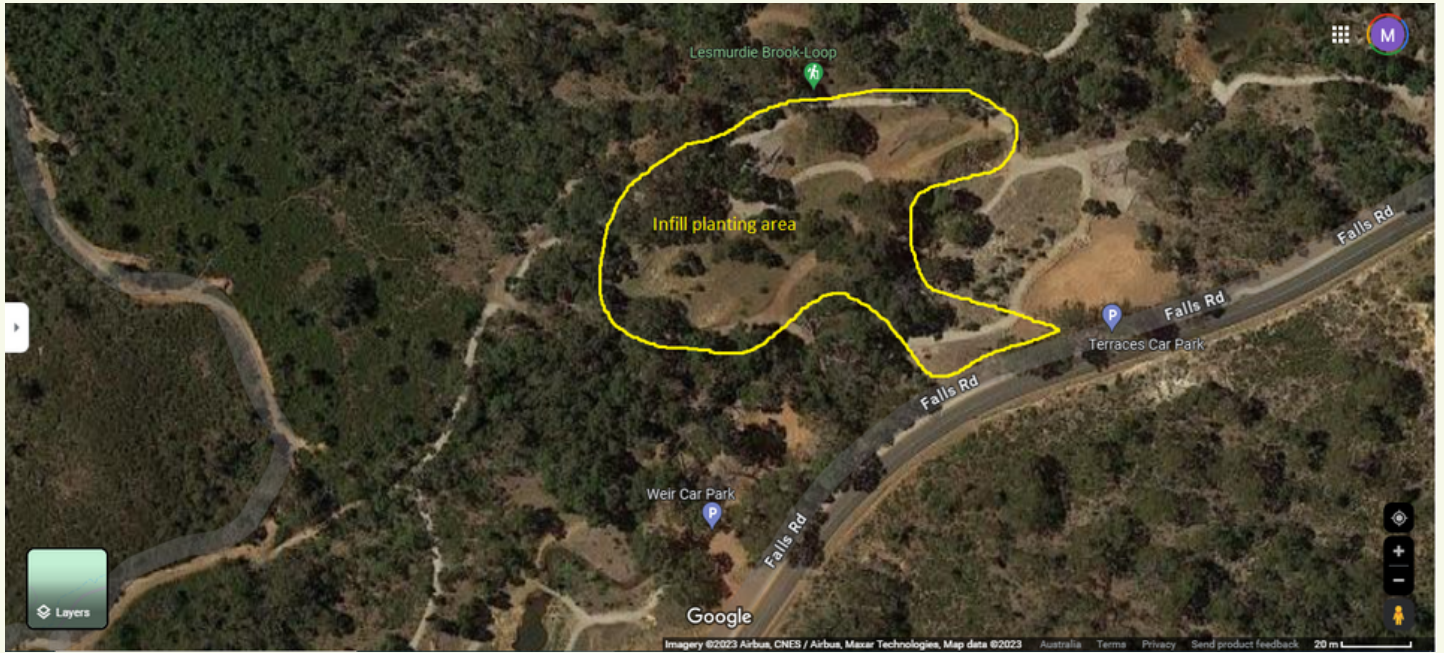


***African Feather Grass at the Eastern end - behind the 'Hockey Stick' close***

Proudly Sponsored by:



This year we continued with the infill planting (mainly in the area north of the Weir Car Park), completed preparations for planting below the Cascades by flattening the creek bank's profile somewhat and then finally planting out the area from the Cascades down to the Falls.



### ***Infill Area - north of the Weir Car Park***

We also had contractors remove the dead African Feather Grass at the far eastern end of our site, ready for planting - the original plan for DBCA to burn this material wasn't possible due to other commitments that they faced. However the planting didn't proceed because nearby residents expressed concerns about mosquito issues that could potentially arise if we went ahead with the landscape modifications that were proposed as part of the planting program. We have therefore put this area on hold until we have a chance to undertake further consultation and review our plans there.



### ***Extension Planting Area - from the Cascades to the Falls***

Proudly Sponsored by:



natural resource management program



Department of Biodiversity, Conservation and Attractions



Our major effort this year in the Infill and Extension project was the final preparations of the riparian zone of the brook from the Cascades to the Falls and then the planting of that area. SG Enviro again generously provided access to an excavator and Dick Parker used it to pare the vertical profile of the banks back to a gentle slope - wherever access was possible without causing damage to the native vegetation. In practice that meant most of the banks from the foot of the Cascades right through to a point roughly level with the commencement of the raised concrete pathway just above the Falls - a distance of about 250 metres. Then over several Busy Bees, mainly during May and June, we planted out this large area. The response from our volunteers was truly amazing for these Busy Bees and peaked with 40 people planting over 4,000 plants in one session alone. As these plantings were in areas with high visitation numbers, we took the precaution of roping off planted areas whilst allowing access to the stream elsewhere. So far that has been fairly successful and the plants are growing well. We were very fortunate in being able to get started as early as May, as that should ensure the plants are well established by the time summer hits.

Most of this planting effort went into a narrow strip on each side the brook. This has advantages in that this area has good, alluvial, soils and generally stays moist for longer than upland sites. However one downside is that during severe flooding, the water can rise over the planted areas and gouge plants out. Unfortunately we did have some major flooding and consequently we lost some plants. Losses were relatively small and we will try and replace these once we believe the worst of the rain is over for the year - probably in November/December. As the soil moisture is fairly good in these areas throughout the year, this late planting should still be successful.

We also conducted substantial weed control exercises using contractors. Weeds targeted were watsonia, freesia, periwinkle and a variety of weeds growing in or close to the brook.

## The Dieback Project

A new initiative this year was the Dieback Project funded by State NRM. Up until this year, we have had no idea whether Dieback was present or not on our site. So the aim of this project was find out whether it was there and, if so, how widespread the infestation was. This would then allow us to determine what action was appropriate in either preventing its introduction or considering how to deal with it if it was found.

Great Southern Bio Logic was chosen to undertake the assessment, in part because the City had recently engaged them to assess an adjoining area to the west of the Falls and abutting Waterfall Road in Forrestfield. Thus they were familiar with the location, the terrain and the flora.

The survey area was the Lesmurdie Brook valley (here valley means the entirety of the land each side of the brook from hilltop to hilltop). The section of the valley surveyed ran from the residential area in the east down to the western boundary of Mundy Regional Park. The basis for selecting this area relates to the effect of gravity. It is generally accepted that one of the main ways that Dieback spreads is downslope with the assistance of rain and/or streamflow.

Unfortunately the results were quite shocking. The contractor found that the entire area above the Falls that was surveyed was riddled with Dieback. So all of our site must now be considered infected. Below the Falls, towards Palm Terrace in Forrestfield there were some areas where Dieback was not present.

The scale of the infestation has left us with a very difficult problem and we will now spend some time seeking advice on how to deal with it. One option is to do nothing but that will almost certainly lead to a major loss of diversity of plant species. In turn that will almost certainly lead to losses in species of invertebrates and higher animals. Treatment with Phosphite is possible but it would be both expensive and time consuming. It would also need to be repeated regularly (possibly annually for the all important shrub layer) from now on with no end in sight.

Proudly Sponsored by:



## The Up the Creek project

There were two major activities in the Up the Creek project this year – the completion and opening of the Aboriginal Cultural Trail and the acquisition and setting up of two greenhouses at the Kalamunda Men's Shed.

In November 2022, we opened the Aboriginal Cultural Trail. There are six signs positioned at various places throughout the project site. Each sign tells a story about a different aspect of Aboriginal life in the pre-colonisation period, and were compiled by respected Noongar elder, Uncle Neville Collard, in collaboration with Sally Wallace from Absolute Trails. The signs were designed by the Design Studio at DBCA with input from Uncle Neville, Sally and ourselves. The rusted look, steel bases were constructed by Dick Parker and installed by him with assistance from Angie Parker.

A huge thanks to all involved.

The opening was MCed by our Mick Davis, with short speeches from Uncle Neville, the Mayor of Kalamunda (Margaret Thomas) and Phil Mutter representing our signage sponsor, Forrestfield and High Wycombe Community Bank. We then walked around to the closer signs while answering any questions the attendees had, before moving down to the Weir Car Park for a special afternoon tea prepared by Angie Parker. While we enjoyed the food and drinks, we were entertained by the marvellous Madjitil Moorna singers, led by Kobi Morrison and featuring two of our members – Jo Randell and Marie Jacquier. Madjitil Moorna generously donated their services, for which we are very grateful.

The afternoon was very special and enjoyed by all who attended.



***The marvellous Madjitil Moorna singers, led by Kobi Morrison***

The purchase of the two green houses was a significant step towards our aim of producing most, if not all, of our future seedlings ourselves. With the formation of the Propagation Group during 2022/23, the production of seedlings has increased steadily and impressively. The green houses have been set up on a blue metal base for plant hygiene reasons and are located alongside our shade houses at the Men's Shed. Once again we would like to thank the Men's Shed for allowing us to set up our propagation infrastructure on their site. We now have three shade houses and two green houses – all with automatic watering systems. So we are in a good position to turn out quite a lot of plants for the site.

Proudly Sponsored by:



natural resource  
management program



Department of Biodiversity,  
Conservation and Attractions



Rotary  
Club of Kalamunda

## OTHER ACTIVITIES

### Busy Bees

Again this year we scheduled our regular Busy Bees for the second Sunday of every month, with extra ones during the planting season. We planted every two weeks until all 10,000 plants were in the ground. Attendance, as mentioned earlier, was great and so huge thanks to all our volunteers who made our 2022/23 achievements possible.

Busy Bees require quite a lot of setting up and so I would like to take this opportunity to thank some special people. Liam Whiting was our Busy Bee Co-ordinator until a few months ago and did a great job. Liam had been in that role for some time and we are all very grateful for his efforts over all of that time. I would also like to thank Marie Jacquier for undertaking the co-ordinator role during some of our busiest planting days. Angie and Sophie Parker were the backbone of our wonderful morning teas and Ruth Greenwood and Steph Bewick stepped in when Angie and Sophie couldn't make it. As a result, every Busy Bee ended with wonderful food and great camaraderie. Dick Parker brought down all the tables, chairs, gazebo, signage and more – a lot of gear. We need a first aid post at all our Busy Bees and Joanna Anderson fulfilled that role on almost all occasions. When she was away, Jo Randall and Max Shine stepped in to cover this vital role. Fortunately they only had minor issues to deal with this year, so well done everyone for staying safe. The First Aid Post was located in the gazebo and so they served an additional role as an information centre for passing visitors.

So a big thanks to all those people.



*Kicking back after a busy busy bee.*

Proudly Sponsored by:



## Maintenance

Over the last 11 years we have accomplished a lot and a legacy of that work is that we are now accumulating an ever increasing amount of maintenance work. In addition we have some structures which are 50 years or older which need work purely because they are so old.

We did a lot of work on the weir in 2021/22 and we have continued those repairs this year. The northern spillway was originally constructed with un-cemented rock paving. Unfortunately this meant that yobbos could remove them and throw them into the weir – which they did. So we have had to redo all that section but this time we have cemented them in place. It would have been nice to be able to replace the paving in the way it was originally installed but we just had to be realistic about what would happen if we did.

The dam between the two gravel car parks had developed a number of leaks in the front wall and all those on the north side of the gap were successfully sealed a few years ago. However there was still a major leak on the south side of the gap and we successfully sealed that this year. There is no evidence of failure of any of these repairs or new leaks opening up, so we are happy that the dam should now be OK for some time to come.

I am also happy to report that the repairs we completed at the little Dam (immediately above the Cascades) in 2021/22 are still looking good despite some major flooding over the winter just gone. The bridges, seats and railings installed under the Up the Creek project require regular maintenance to keep them looking good and to preserve the timber. This year we oiled all the seats and railings as well as painting the “feet” of the seats with bitumen to slow down the degradation of the timber touching the ground.

Weeding, particularly woody weeding, is another task that can't be ignored if we are to continue towards virtual elimination of the worst weed species. Having removed the mature woody weed trees or shrubs up to 10 years ago, it is vital that we ensure that we remove all seedlings of these species before they grow large enough to set seed of their own. If we don't, it will set us back many years. So we regularly remove all those we can find and that has continued this year. Numbers are dropping substantially and those areas where we have been operating longest (the eastern end) should be approaching the point where the seed bank is exhausted. Time will tell.

This year saw the completion of the removal of mature weedy wattles over the entire site. Whereas the vast majority of this work was completed much earlier in the project, there were still areas on the fringes where mature specimens grew. These wattles were mulched using equipment kindly loaned to us by John from Tree and Palm Solutions and we are very grateful for his generosity. We have used the mulch generated to smother weeds in the “Picnic Area” just west of the Weir Car Park.

Weeding of a variety of other species has been done individually by members at their convenience and that is making a real difference. Particular thanks go to Andrew Mitchell but there are many others.



***The seating got a make over***



***Dam wall stabilised***

Proudly Sponsored by:



natural resource  
management program



Department of Biodiversity,  
Conservation and Attractions



Rotary  
Club of Kalamunda



## Sanderson Road

At last year's AGM we were still liaising with the City to find a suitable venue to call home. In late June 2022 Nicole O'Neil from the City suggested a site in Sanderson Road, Lesmurdie would be worth looking at. The address is 15 Sanderson Road and it is the old Kindergarten building adjacent to the Girl Guides WA hall (which is leased by the Darling Range branch of the Wildflower Society – a nice connection). Number 15 was leased by the Kalamunda Youth Swing Band but, in line with a policy of maximising the use of its assets, the City was keen to find a co-tenant. The Swing Band was receptive to the idea and so we began discussions with them. The location is a good one for us as it is reasonably close to the Falls area. The prospective use patterns of the two groups complemented each other and the spaces available to us for exclusive use were good. We agreed to draw up a Memorandum of Understanding, with the Swing Band remaining as the Leaseholder and FOULF becoming a tenant of the Swing Band. In early April 2023 the MOU was signed off by both parties and we finally had a home.

Our first committee meeting was held on the new premises on the 16th of May 2023.

Prior to moving most of our equipment to Sanderson Road, and properly settling in, we need to bolster the security on what will become our storage area. We have met with the City and have an application form which we will submit shortly.

## Seed Collection

We purchased licences to allow us to collect seed and cutting material from a wide area close to the Falls. We also gained authority to employ a licenced seed collection contractor to collect over the same area on our behalf. The combined seed collection covered just under 40 species and topped up a fairly comprehensive seed bank we have built up over many years. This material allows our Propagation Group to raise a wide range of seedlings of local provenance species, which is critical to our ongoing revegetation program.

## The Propagation Group

A particularly significant step forward came this year with the formation of our very own Propagation Group under the leadership of Carmel and Terry Ballinger. Carmel and Terry had been raising seedlings in their own green house for many years and the formation of the Propagation Group has enabled them to pass on some of their knowledge and, at the same time, greatly magnify the number of plants produced. Marie Jacquier, Jo Randell, Angie Parker, Steph Bewick, Vanessa Abbotts, Robin Faulkner and Danielle Page are just some of the regular attendees at the (roughly) fortnightly workshops. With the acquisition of the green houses, workshops are now conducted at the Men's Shed on Monday afternoons and I am sure that the group would welcome new members with open arms. There are very large numbers of freshly germinated seedlings which need to be pricked out and potted up.

## Creeklines – our newsletter

2022/23 was our first full year of producing our newsletter – Creeklines. It comes out quarterly and with blood sweat and tears your editorial team managed to get each issue out close to the nominated deadline. Particular thanks go to Nick Underwood, John Greenwood and Marie Jacquier but also to everyone who contributed an article for any issue. We have had a lot of feedback, no negative comments and a lot of praise for the high standard and interesting articles. So well done everyone. We are always looking for new articles, so give it some thought and submit a story or article.

Proudly Sponsored by:



## Promotional activities

2022/23 saw us lift our exposure to the community and a great deal of thought went into promoting the group more effectively - much of which was led by Nick Underwood. We attended two community events (Forrest Festival and Kalamunda Show), purchased materials (storyboards, laminated photos etc.) to mount in our marquee to showcase our story at these events and Busy Bees.

I gave a talk about the group at the AGM of the Nature Reserves Preservation Group, an event attended by quite a few local friends groups. Again a good chance to share ideas.

I was also fortunate to be invited to the launch of the Parliamentary Friends of Landcare – an initiative of WA Landcare Network – at Parliament House. Mick Davis, as Chair of WALN, was a keynote speaker on the night. There were many people present who represented groups similar to our own and it was a good chance to meet up with them and discuss common issues. It would seem to be a very worthwhile, bipartisan, idea and the politicians (State) who were involved appeared genuine in their interest and concern. Hopefully we will see some action flow from it.

Our social media group has been active all year and that has also increased our exposure - and to a much wider audience. It has been noticeable this year how many Busy Bee attendees come long distances to help out and this is mainly due to the reach of Facebook and similar platforms.

We also had 26 shirts (donated by DBCA) embroidered with “We love the Falls” and our FOULF logo. These were given to our regulars at that time and we could repeat this exercise whenever the need arises. It raises awareness and invites people, visiting the Falls when we are having a Busy Bee or a similar activity, to stop and have a chat.

Partly as a result of these activities, our membership has continued to grow. Our total membership is now over 220 of which about 40 are regular, or semi regular, attendees at Busy Bees and similar events. The other 180 are our vital ears and eyes in the community, as well as promoting our project.

Our newsletter now goes out to over 300 subscribers.

## Florafinder

Terry, Carmel and John have collaborated to develop a plant identification tool to assist members and the general public to identify the native plants, as well as the common weeds, found on our site. Called Florafinder, it is simple to use and can be found on our website at <https://friendsofupperlesmurdiefalls.org/wildflowers-weeds>

Amongst its many features is the facility to select only those plants flowering at the time you are looking and to select by flower colour. With over 1,200 photos, determining the name of the plant in front of you is now so much easier.

This has been a mammoth effort by these three individuals and we owe them special thanks. Please try it out and give any feedback to any of John, Terry or Carmel. I am sure they would love to hear from you.

Proudly Sponsored by:



natural resource  
management program



Department of Biodiversity,  
Conservation and Attractions



Rotary  
Club of Kalamunda



## Almond orchard

It is now two years since we planted the almond orchard and I am very pleased to be able to report that all the trees are still alive and most are growing strongly. Some are now considerably taller than their cages. In the summer of 2021/22 we gave the trees very regular watering while they became established. In the summer just gone we still gave some additional water but much less. We will monitor their condition during summer 2023/24 and give an occasional watering if it is required but I am hoping they will cope without this time.

## Falls area history

Carmel Ballinger is our group's principal site historian. Many others contribute to the cause but Carmel and Terry hold the broad understanding of the settlement of the area. You will all have seen Carmel's interesting articles in our newsletters. It is a continuing search as we try to glean what little information is out there. If anyone has anything – no matter how small or seemingly insignificant – please contact Carmel, Terry or myself. We would be extremely grateful.

Recently we were contacted by the owner of a property in Kimbarlee Way who has the original soak used by Mr JD Manning – one of the very earliest property owners in the area – in her backyard. She showed us the soak and wishes to preserve it.

Over the last couple of years I have been trying to find out more about one property owner in particular – Mr AVR Abbott. For a man who was a distinguished state politician with an impressive war record (WW1 and WW2) there is an astonishing lack of information about him. He owned a block on our site from 1958 to 1973 when it was resumed by the Government and added to the park. Once again, I would be very grateful to anyone who can add anything to the story.

## Reintroduction of native fish species

Still no luck on getting any native fish with which to stock the brook but we will keep trying. Chris Bird from DPIRD (Aquatic Biosecurity) assures us that we are still on their priority list for restocking but that the Water Corporation was unable to clear the drains, where the fish live, of Bullrushes. It was planned for this year but they were inundated with other higher priorities. They still intend to do the work but not in time for us this year. Until the drains are cleared, it isn't possible to harvest the fish we need.

## The Parking

The installation of extra parking bays along Falls Road made little progress again this year. In late August 2023, Sinead McGuire (the new Director, Asset Services at the City) arranged a meeting to discuss the issue. She brought down a plan of what was proposed but we had some major concerns about the design and she took those concerns back to her team for review. We are yet to hear back from the City but hope that will happen soon.

Proudly Sponsored by:



## WHERE TO FROM HERE

By the end of calendar year 2023, we will have finished four of the current five projects we are working on. The only one still active going into calendar year 2024 will be the Up the Creek project. Final reports for both the Erosion Gully project and the Eroded Tributary project were completed in September 2023. The Infill and Extension project still has some more planting work to complete in 2023.

Similarly the Dieback project still has some work to come.

Our major effort this coming year will go into

- 1) The backlog of maintenance work. Repairs to paths and manmade structures such as the Weir and the two flowdams, woody weed eradication and other weed problems such as Taro and Three Cornered Garlic.
- 2) Propagation and planting out of native plants.
- 3) Renewing seed collection licences and collecting seed ourselves. There is no funding for seed collection this year and therefore we can't employ contractors. However Tranen have indicated they will help with advice where they can.
- 4) Completing security modifications at Sanderson road and fully moving in.
- 5) Promotional activities such as shows and festivals.
- 6) If we manage to get some stocks of native fish, we will need to reduce feral fish numbers prior to releasing the native species.

## SPONSORS

Once again I would like to express our deep gratitude to our major sponsors, State NRM, Perth Region NRM, the Rivers and Estuaries section of DBCA, the Rotary Club of Kalamunda, the City of Kalamunda, Lotterywest, Forrestfield Community Bank (Bendigo Bank), SG Enviro and Tree and Palm Solutions. Our project is located within the Lesmurdie National Park and Mundy Regional Park, which come under the control of the Parks and Wildlife section of the Department of Biodiversity, Conservation and Attractions. The Department was the catalyst for our formation in 2012 and has strongly supported us ever since. We really value that support and particularly the trust that they have shown in us for the last 11 years.

The Lesmurdie and Districts Community Association (LDCA) was a wonderful partner for many years and enabled us to raise considerable funding for improvements that weren't covered by the NRM grants. Paths, bridges, earthworks, car parks, children's climbing frames, the Aboriginal Cultural Trail and more – the Up the Creek (UTC) project.

The Kalamunda Men's Shed partnered with us to build shade houses and green houses where we could raise our own plants and where we could hold plants grown for us by nurseries, prior to planting out. We greatly value our association with KMS and hope it will continue and deepen for many years.

Mike Robinson  
Chair,  
Friends of Upper Lesmurdie Falls Inc.  
15/10/2023.

Proudly Sponsored by:



natural resource  
management program



Department of Biodiversity,  
Conservation and Attractions



Rotary  
Club of Kalamunda



## FRIENDS OF UPPER LESMURDIE FALLS COMMITTEE FOR 2023/24

As I flagged in the Chairman's Report, I stepped down from the Chairmanship at our AGM in October and I am very pleased to report that Mick Davis was elected unopposed to that position, as was Marie Jacquier to the Vice Chair position.

Most of the 2022/23 committee renominated and were duly elected. So the group is in very good hands as we move into another busy year.

Jo Randall, Liam Whiting and Danielle Page have resigned due to personal circumstances making it impossible to continue on committee this year. I would like to thank them all for their considerable contributions over not only last year but, in some cases, for many years before that. It has been a real pleasure to work alongside you.

Max Shine is the only new appointee to the committee and we all look forward to working with Max going forward.

The AGM approved the committee to recruit additional committee members and I would encourage anyone with any interest in helping out, to talk to any of this year's committee about putting a toe in the water.

Following the AGM, the committee created a range of portfolios, with at least one committee member assigned to each. These portfolios are broader than the committee and we would welcome any member who would like to help out in any way they can. This would be entirely at your discretion with regard to how and when. Just let the designated committee member know of your interest and they will welcome you aboard.

These portfolios are anticipated to develop into small groups of like-minded people that act more or less independently. The Propagation Group which launched earlier this year is a good model for what we would like to see. They meet regularly with attendance at each member's discretion but with up to eight or so members at some events. Very social and a great time is had by all.

The full list of committee members and their roles is as follows.

### **Executive**

Chair	Mick Davis
Vice Chair	Marie Jacquier
Secretary	Mike Mansfield
Treasurer	John Greenwood

### **General committee**

Assets and equipment registrar	Mike Robinson
Busy Bee Co-ordinator	Max Shine
DBCA contact.	Mike Robinson
First Aid Officers – two.	Joanna Anderson and Max Shine
Grants Co-ordinator	Mick Davis
Maintenance and repair co-ordinator	Dick Parker
Propagation Group Co-ordinators	Carmel and Terry Ballinger
Publicity co-ordinator	Nick Underwood
Social co-ordinator.	Mick Davis
Weeding co-ordinator	Steph Bewick

Proudly Sponsored by:





***Left to right: Mike Mansfield ( Secretary), Mike Robinson, Terry Ballinger, Steph Bewick, Marie Jacquier (Vice Chair), Mick Davis (Chair), Dick Parker, John Greenwood (Treasurer), Joanna Anderson, Max Shine.***

Proudly Sponsored by:



natural resource  
management program



Department of Biodiversity,  
Conservation and Attractions



# A TRIBUTE TO MIKE ROBINSON



Mike Robinson has been the powerhouse behind FOULF's great success since our very beginnings in 2012. With a vision for making the Upper Lesmurdie Falls area a better place for all, he has been inaugural Chairperson for the last 11 years and on behalf of all our members, the people who enjoy their time at the Falls, our funders and everyone who's been part of the FOULF journey so far, we would like to thank you Mike, from our very collective core for all of your efforts.

As a powerful agent of change, Mike has brought his vision, local connections, passion for community, a fair and inclusive approach to collaborating and so much more to bear to help make Upper Lesmurdie Falls what it is today.

Our community celebrates this success daily and it is testament to the way Mike has spearheaded our group that so many people have come on-board with our work; revelling in the sense of community, pride of achievement and feeling of being part of something bigger that Mike has championed so well.

Leading by example, tucking into the hard jobs, and the painful paperwork, your tireless efforts are something of legend around our community - and well beyond our borders too!

Balancing the demands of some serious interstate and international hockey commitments while keeping FOULF on course through all conditions is a task in itself; but maintaining that infectious smile and positive, can-do-anything attitude is a real achievement.

Under your direction FOULF has removed some serious weeds, created amazing walk paths through the forest, literally kept Lesmurdie Brook on course, built strong bridges, plugged gaps in dams, made dams that leaked (on purpose!), identified the culture of the area, planted thousands of native plants and rushes, built habitat for birds, turtles, mammals, fish, water-bugs, as well as countless nature loving adults and children. We know you're not going anywhere soon - but we just want to say, "Thank you for what you've helped our community achieve so far - and we look forward to doing lots more great work with you by our side in the future".

On behalf of the FOULF committee, all of our members, sponsors, supporters and everyone else who's been to the Falls since 2012 and seen the changes our community have made through you, with each other and for each other.

Sincerely,

Mick Davis  
Incoming FOULF Chairperson  
November 2023

Proudly Sponsored by:

